

Next Generation Tools By



TCT
BAND SAW
BLADE

New Edge of Technology
DIAMOND
TECHNOLOGY

Awe-inspiring
Precision &
Performance

BRAZE - REPLACEABLE - PCD
Wood Working Tools

The Sign Of Excellence

Next Generation Tools By



The Company, Yash Tooling System is setting new Benchmarks in tools' designing, manufacturing and overall quality operations. With introduction of these tools with Replaceable Knives, Yash now has the distinction of being the first Indian company to undertake manufacturing of such international quality products. In the late nineties, Brazed tools market was teeming with various manufacturers, yash though being late entrant – acquired a position of premium brand very quickly. Still the quality brazed tools users always prefer Yash over any other product. Yash uses the best European machinery & processes to manufacture its products, with highest quality raw material. In short, Brazed or Replaceable, Yash tools are powered to give unbeatable performance and a long – long working life.

To win the markets, you have to do something extra – ordinary. Yash helps you achieve that. Your wood-work and panel jobs can be crafted so meticulously and consistently qualitatively that your product stand apart from the crowd, making you a winner of the customer choice. Yash Symbolises ultimate quality. Such highly dependable and systematically precision tools, till now were possible with imported brands only. Now you have it here in 'Yash', that too at comparably lower cost and with reliable supply and service support.

INNOVATIVE TOOLS FOR WOOD WORKING INDUSTRIES

Our In House Machine Facility

For

ENHANCE QUALITY | BETTER PERFORMANCE | UN BEATABLE PRICE
FASTEST DELIVERY | AFTER SALES & SERVICE



PCD Grinding



CNC Balancing Machine



Profile Grinding



CNC Profile Grinding



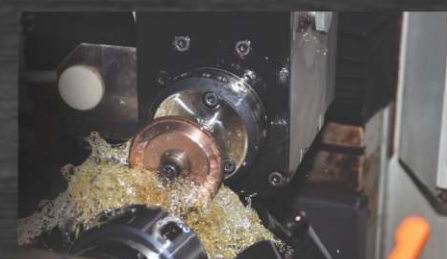
Induction Brazing

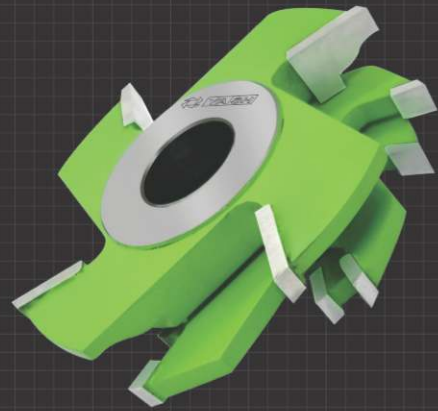


CNC Vertical Milling



CNC Turning





...discover It!

BRAZE - REPLACEABLE - PCD Wood Working Tools

Braze Tooling

For : Door & Window, Kitchen Shutter,
Solid Wood Finger Jointing Board, Grooving, Planning,
Profiling For Furniture...

04



Replaceable Tooling

For : Door & Window, Kitchen Shutter,
Solid Wood Finger Jointing Board, Grooving, Planning,
Profiling For Furniture...

88



CNC Router

For : Grooving, Nesting, Engraving, Profiling & Planning...

Other Accessories

Hss Chain - Planner Blade - Collet - Holder -
Diamond Wheel - Trimming Cutter

115



Saw Blades

For : Cutting...



157



PCD

For : Grooving, Cutting, Nesting, Profiling & Engraving...



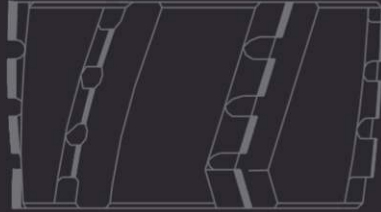
168



DIAMOND

TECHNOLOGY

MANUFACTURING PLANT



PCD TOOLS

Pcd Router Bits

169



Pcd Membrane Router Bits

171



Pcd Saw Blade For Panel Saw

173



Pcd Pre-milling Cutter

176



Replaceable Pcd Pre-milling Cutter

180



PCD EDGE TRIMMING CUTTER

182

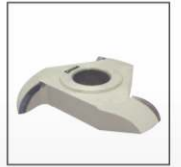


CHALLENGE

UNBEATABLE PRICE
WITH SUPERIOR QUALITY

Pcd J Profile

183



Pcd Panel Cutter

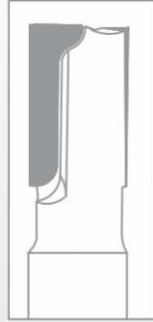
184



Pcd Door Set

185





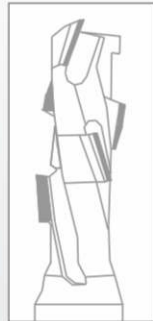
PCD Straight Router Bit Use for
Cutting, Grooving, Sizing, & Finishing on CNC
Machines : CNC Router
Material : Chip Board, Laminated Plywood, MDF,
Melamine, Plastic etc...

DIAMOND
TECHNOLOGY

YTP-01				
ORDER CODE	DIA	THICK	SHANK	TEETH
YTP 1 101	6	20	8	2
YTP 1 102	8	15	8 / 12	2
YTP 1 103	8	20	8 / 12	2
YTP 1 104	8	30	8 / 12	2
YTP 1 105	10	20	8 / 12	2
YTP 1 106	10	25	8 / 12	2
YTP 1 107	10	30	8 / 12	2
YTP 1 108	12	20	8 / 12	2
YTP 1 109	12	25	8 / 12	2
YTP 1 110	12	30	8 / 12	2
YTP 1 111	12	35	8 / 12	2

Pcd Spiral Router Bit - YTP 02

DIAMOND
TECHNOLOGY



PCD Spiral Router Bit Use for
Cutting, Grooving, Sizing, & Finishing on CNC
Machines : CNC Router
Material : Chip Board, Laminated Plywood, MDF,
Melamine, Plastic etc...

YTP-02				
ORDER CODE	DIA	THICK	SHANK	TEETH
YTP 2 101	10	25	12	1 + 1
YTP 2 102	12	25	12	1 + 1
YTP 2 103	12	30	12	1 + 1
YTP 2 104	12	35	12	1 + 1
YTP 2 105	16	35	16	1 + 1
YTP 2 106	16	45	20	1 + 1
YTP 2 107	18	45	20	1 + 1
YTP 2 108	20	45	20	1 + 1

Pcd Spiral Router Bit - YTP 03

DIAMOND
TECHNOLOGY



PCD Spiral Router Bit Use for
Cutting, Grooving, Sizing, & Finishing on CNC
Machines : CNC Router
Material : Chip Board, Laminated Plywood, MDF,
Melamine, Plastic etc...

YTP-03				
ORDER CODE	DIA	THICK	SHANK	TEETH
YTP 3 101	10	25	12	2 + 2
YTP 3 102	12	25	12	2 + 2
YTP 3 103	12	30	12	2 + 2
YTP 3 104	12	35	12	2 + 2
YTP 3 105	16	35	16	2 + 2
YTP 3 106	16	45	20	2 + 2
YTP 3 107	18	45	20	2 + 2
YTP 3 108	20	45	20	2 + 2



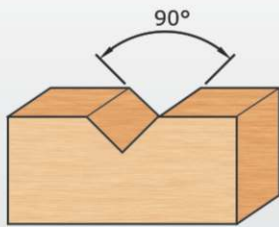


PCD Straight Router Bit Use for
Cutting, Grooving, Sizing, & Finishing on CNC
Machines : CNC Router
Material : Chip Board, Laminated Plywood, MDF,
Melamine, Plastic etc...

DIAMOND
TECHNOLOGY

YTP-04				
ORDER CODE	DIA	Radius	SHANK	TEETH
YTP 4 101	6	3 R	8	2
YTP 4 102	8	4 R	8 / 12	2
YTP 4 103	10	5 R	8 / 12	2
YTP 4 104	12	6 R	8 / 12	2

PCD "V" Groove Router Bit - YTP 5

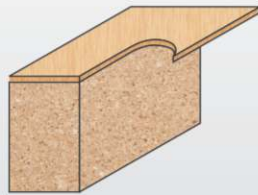


PCD Router Bit Use for
Cutting, Grooving, Sizing, & Finishing on CNC
Machines : CNC Router
Material : Chip Board, Laminated Plywood, MDF,
Melamine, Plastic etc...

DIAMOND
TECHNOLOGY

YTP-05				
ORDER CODE	DIA	Degree	SHANK	TEETH
YTP 5 101	12	90°	6 / 6.35 / 8 / 12	2
YTP 5 102	15	90°	6.35 / 8 / 12	2
YTP 5 103	19	90°	6.35 / 8 / 12	2
YTP 5 104	25	90°	8 / 12	2
YTP 5 105	32	90°	8 / 12	2
YTP 5 106	40	90°	12	2

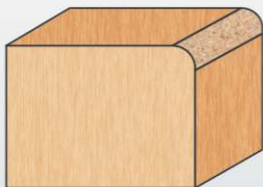
PCD Trim Router Bit - YTP 6



YTP-06				
ORDER CODE	DIA	Degree	SHANK	TEETH
YTP 6 101	6.35	20	6 / 6.35 / 8	2
YTP 6 102	9.52	32	6 / 6.35 / 8	2
YTP 6 103	12.7	38	6 / 6.35 / 8 / 12	2
YTP 6 104	12.7	50	6 / 6.35 / 8 / 12	2

DIAMOND
TECHNOLOGY

PCD Trimmer Router Bit - YTP 7



YTP-07			
ORDER CODE	Radius	SHANK	TEETH
YTP 7101	2	6 / 6.35 / 8	2
YTP 7102	3	6 / 6.35 / 8	2

DIAMOND
TECHNOLOGY

PCD ROUTER BITS

Make by 

Tool life is expected up to
25 times longer
when compared with carbide tipped tooling

Saves time and money

Consistently good component surface finish

CHALLENGE
UNBEATABLE PRICE
WITH SUPERIOR QUALITY

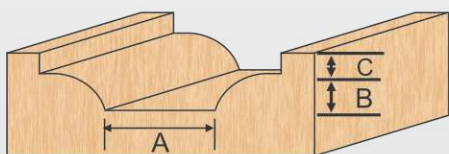
DIAMOND TECHNOLOGY

PCD MEMBRANE ROUTER BITS

PCD Membrane Router Bit - YTP 8



More than
10,000 Door

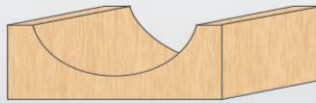


YTP-08				
ORDER CODE	DIA	A	B	SHANK
YTP 8 101	25	10	1	12
YTP 8 102	25	10	1.5	12
YTP 8 103	25	10	2	12
YTP 8 104	25	10	2.5	12
YTP 8 105	25	10	3	12
YTP 8 106	25	10	4	12
YTP 8 107	30	14	1	12
YTP 8 108	30	14	1.5	12
YTP 8 109	30	14	2	12
YTP 8 110	30	14	2.5	12
YTP 8 111	30	14	3	12
YTP 8 112	30	14	4	12
YTP 8 113	32	15	1	12
YTP 8 114	32	15	1.5	12
YTP 8 115	32	15	2	12
YTP 8 116	32	15	2.5	12
YTP 8 117	32	15	3	12
YTP 8 118	32	15	4	12
YTP 8 119	35	17	1	12
YTP 8 120	35	17	1.5	12
YTP 8 121	35	17	2	12
YTP 8 122	35	17	2.5	12
YTP 8 123	35	17	3	12
YTP 8 124	35	17	4	12
YTP 8 125	38	18	1	12
YTP 8 126	38	18	1.5	12
YTP 8 127	38	18	2	12
YTP 8 128	38	18	2.5	12
YTP 8 129	38	18	3	12
YTP 8 130	38	18	4	12
YTP 8 131	40	20	1	12
YTP 8 132	40	20	1.5	12
YTP 8 133	40	20	2	12
YTP 8 134	40	20	2.5	12
YTP 8 135	40	20	3	12
YTP 8 136	40	20	4	12





More than
10,000 Door



Machines : CNC Machine
Material : Solid Wood, MDF & Plywood

DIAMOND
TECHNOLOGY

YTP-09			
ORDER CODE	DIA	Radius	SHANK
YTP 9 101	12	6	12
YTP 9 102	15	7.5	12
YTP 9 103	19	9.5	12
YTP 9 104	25	12.5	12
YTP 9 105	30	15	12
YTP 9 106	32	16	12
YTP 9 107	35	17.5	12
YTP 9 108	38	19	12
YTP 9 109	40	20	12

PCD Membrane Router Bit - YTP 10

DIAMOND
TECHNOLOGY

Machines : CNC Machine
Material : Solid Wood, MDF & Plywood



More than
10,000 Door



YTP-10				
ORDER CODE	DIA	THICKNESS	RADIUS	SHANK
YTP 10 101	12	1	18.5	12
YTP 10 102	12	1.5	12.8	12
YTP 10 103	12	2	9.9	12
YTP 10 104	12	2.5	8.5	12
YTP 10 105	15	1	28.6	12
YTP 10 106	15	1.5	19.5	12
YTP 10 107	15	2	15.1	12
YTP 10 108	15	2.5	12.5	12
YTP 10 109	19	1	45.6	12
YTP 10 110	19	1.5	30.8	12
YTP 10 111	19	2	23.6	12
YTP 10 112	19	2.5	19.3	12
YTP 10 113	25	1	78.6	12
YTP 10 114	25	1.5	52.8	12
YTP 10 115	25	2	40.1	12
YTP 10 116	25	2.5	32.5	12
YTP 10 117	25	3	27.5	12
YTP 10 118	30	1	113	12
YTP 10 119	30	1.5	75.8	12
YTP 10 120	30	2	57.3	12
YTP 10 121	30	2.5	46.3	12
YTP 10 122	30	3	38.9	12
YTP 10 123	32	1	128.5	12
YTP 10 124	32	1.5	86.1	12
YTP 10 125	32	2	65	12
YTP 10 126	32	2.5	52.5	12
YTP 10 127	32	3	44.2	12
YTP 10 128	35	1	153.6	12
YTP 10 129	35	1.5	102.8	12
YTP 10 130	35	2	77.6	12
YTP 10 131	35	2.5	62.5	12
YTP 10 132	35	3	52.5	12
YTP 10 133	38	1	181	12
YTP 10 134	38	1.5	121.1	12
YTP 10 135	38	2	91.3	12
YTP 10 136	38	2.5	73.5	12
YTP 10 137	38	3	61.7	12
YTP 10 138	40	1	200.5	12
YTP 10 139	40	1.5	134.1	12
YTP 10 140	40	2	101	12
YTP 10 141	40	2.5	81.3	12
YTP 10 142	40	3	68.2	12

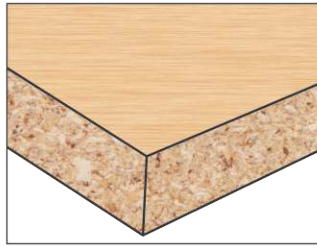


Technical Details :

Horizontal panel sizing machines with scorer.

Application :

Triple chip tooth with positive cutting angle.
Material: Chipboard or MDF laminated with melamine or plastic materials.



YTP-11

ORDER CODE	DIA	B	BORE	TEETH
YTP 11 101	250	3.2	30	80
YTP 11 102	300	3.2	30	72
YTP 11 103	300	3.2	30	96

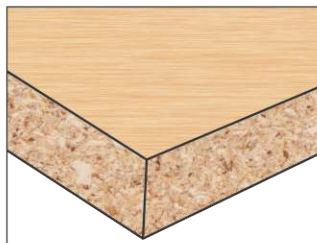


Technical Details :

Use on Horizontal these sizing machines that do not allow the adjustment of the scoring depth, Max scoring depth 2 mm.

Application :

Features: ATB Tooth 5° with positive cutting angle.
Material: Chipboard, MDF & Laminate Ply



Available in
Eco Line

Max Line

YTP-12

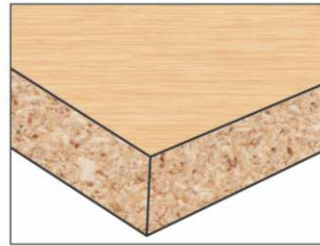
ORDER CODE	DIA	B	BORE	TEETH
YTP 12 101	100	2.8-3.6	20	12 + 12
YTP 12 102	120	2.8-3.6	20	12 + 12
YTP 12 103	120	2.8-3.6	22	12 + 12

Technical Details :

Use on Horizontal panel sizing machines with scorer.

Application :

Chipboard or MDF laminated with melamine or plastic materials.



YTP-13

ORDER CODE	DIA	B	BORE	TEETH
YTP 13 101	120	3.0-5.0	22	24
YTP 13 102	120	3.0-5.0	30	24

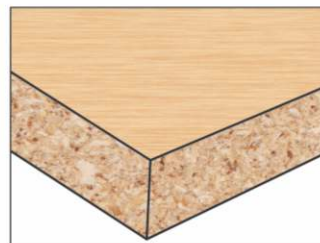
PCD Conical Scoring For Beam Saw - YTP 14

Technical Details :

Use on Horizontal panel sizing machines with scorer.

Application :

Triple chip tooth with positive cutting angle.



YTP-14

ORDER CODE	DIA	B	BORE	TEETH
YTP 14 101	150	4.3-5.5	30	36
YTP 14 102	150	4.3-5.5	45	36
YTP 14 103	180	4.3-5.5	30	36
YTP 14 104	180	4.3-5.5	45	36
YTP 14 105	200	4.3-5.5	45	36
YTP 14 106	200	4.3-5.5	65	36

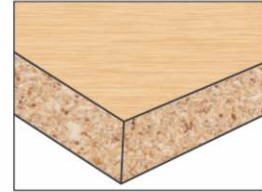
DIAMOND
TECHNOLOGY

Technical Details :

Use on Horizontal panel sizing machines with scorer.

Application :

Triple chip tooth with positive cutting angle.
Material: Chipboard or MDF laminated with melamine or plastic materials



YTP-15				
ORDER CODE	DIA	B	BORE	TEETH
YTP 15 101	300	4.4	30	72
YTP 15 102	300	4.4	60	72
YTP 15 103	320	4.4	65	72
YTP 15 104	350	4.4	60	72
YTP 15 105	350	4.4	65	72
YTP 15 106	380	4.4	60	72
YTP 15 107	400	4.4	60	72



25 Times
Longer Life

CHALLENGE
UNBEATABLE PRICE
WITH SUPERIOR QUALITY



1st Time in India
PCD PRE MILLING CUTTER
MANUFACTURING PLANT

Jointing cutter in diamond with helicoidal wings, height PCD 3 mm, suitable for working on chipboard panels, coated, laminated, veneered, M.D.F., it can be used on edge banding machines. Excellent finishing, low noisiness.





Technical Details :

Used on all Edge Bander Machines

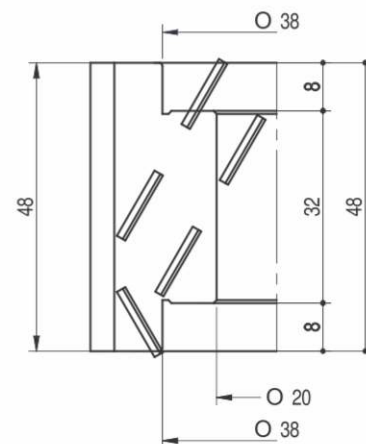
Application :

Jointing cutter in diamond with helicoidal wings, height PCD 2,5 mm, suitable for working on chipboard panels, coated, aminated, veneered, M.D.F, it can be used on edge banding machines. Excellent finishing, low noisiness.

YTP-16] Used :-HUNNY IMPEX , (Edge Bander M/C)
ORDER CODE		DIA	CUTTING LENGTH	BORE	TEETH	
YTP 16 101	RH	125	43	30	12] Used :-WOOD TECH , (Edge Bander M/C)
YTP 16 101	LH	125	43	30	12	
YTP 16 102	RH	125	40	30	12] Used :-KDT NANXING, (Edge Bander M/C)
YTP 16 102	LH	125	40	30	12	
YTP 16 103	RH	125	65	30	12] Used :-MADE IN CHAINA, (Edge Bander M/C)
YTP 16 103	LH	125	65	30	12	
YTP 16 104	RH	100	48	30	12	
YTP 16 104	LH	100	48	30	12	

YTP-16] Used :-Auto Edge Bander M/C
ORDER CODE		DIA	CUTTING LENGTH	BORE	TEETH	
YTP 16 105	RH	80	45	30	9	
YTP 16 105	LH	80	45	30	9	
YTP 16 106	RH	80	48	30	9	
YTP 16 106	LH	80	48	30	9	
YTP 16 107	RH	80	52	30	9	
YTP 16 107	LH	80	52	30	9	

PCD Pre-Milling Cutter Brazed YTP 16



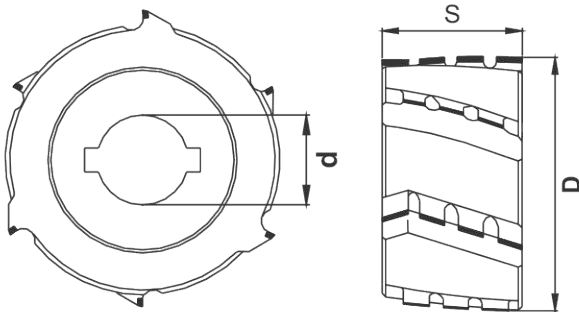
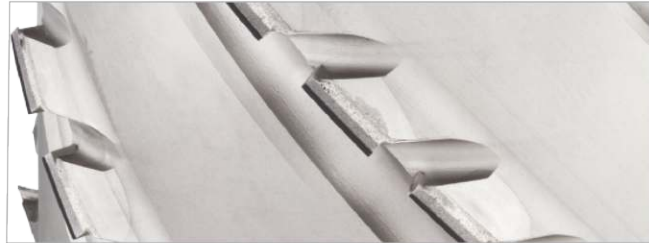
YTP-16] Used :-WOOD TECH (Edge Bander M/C)
ORDER CODE		DIA	CUTTING LENGTH	BORE	TEETH	
YTP 16 108	RH	62	48	20	12	
YTP 16 108	LH	62	48	20	12	

Technical Details :

Used on all Edge Bander Machines

Application :

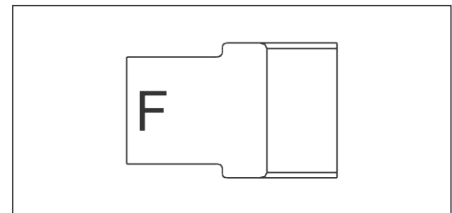
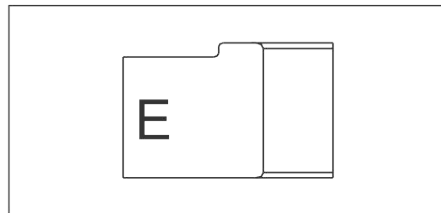
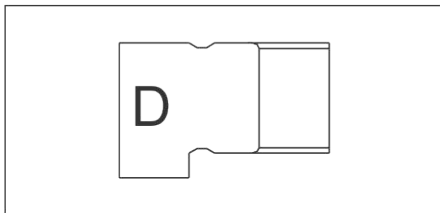
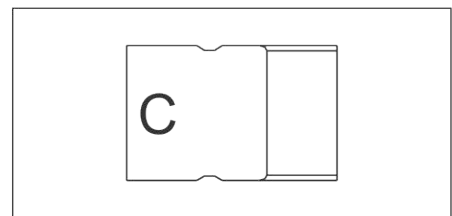
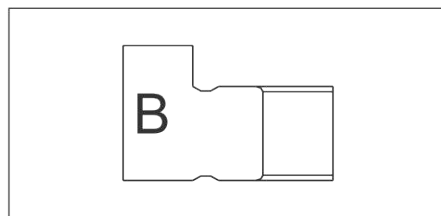
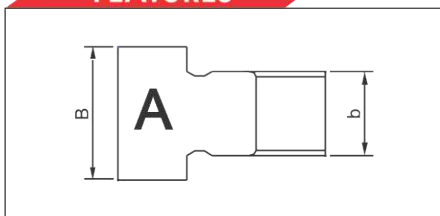
Joining cutter in diamond with helicoidal wings, height PCD 2,5 mm, suitable for working on chipboard panels, coated, aminated, veneered, M.D.F, it can be used on edge banding machines. Excellent finishing, low noisiness.



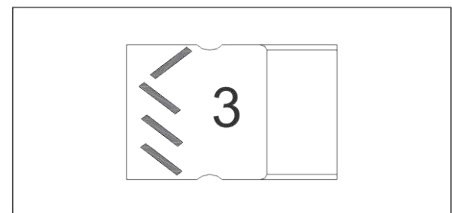
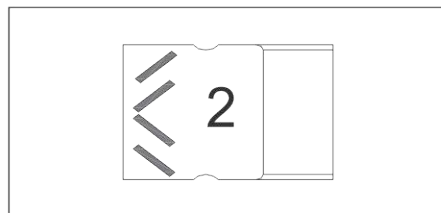
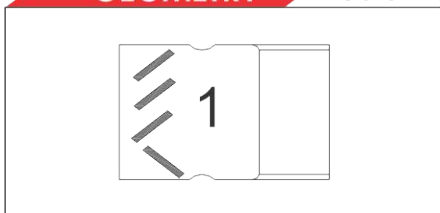
YTP-16		Used :-WOOD TECH (Edge Bander M/C)				
ORDER CODE		DIA	CUTTING LENGTH	BORE	TEETH	
YTP 16 109	RH	125	45	30	9	
YTP 16 109	LH	125	45	30	9	

YTP-16		Used :-UMABOY (Edge Bander M/C)				
ORDER CODE		DIA	CUTTING LENGTH	BORE	TEETH	
YTP 16 110	RH	125	62	30	12	
YTP 16 110	LH	125	62	30	12	

FEATURES



GEOMETRY 30° & 45°





Technical Details :

Used on all Edge Bander Machines

Application :

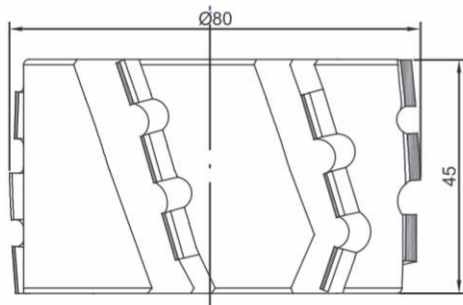
Joining cutter in diamond with helicoidal wings, height PCD 2,5 mm, suitable for working on chipboard panels, coated, aminated, veneered, M.D.F., it can be used on edge banding machines. Excellent finishing, low noisiness.

YTP-16		Used :-JAI (Edge Bander M/C)			
ORDER CODE		DIA	CUTTING LENGTH	BORE	TEETH
YTP 16 111	RH	125	48	30	9
YTP 16 111	LH	125	48	30	9

YTP-16		Used :-JAI (Edge Bander M/C)			
ORDER CODE		DIA	CUTTING LENGTH	BORE	TEETH
YTP 16 112	RH	125	62	30	12
YTP 16 112	LH	125	62	30	12

YTP-16		Used :-JAI (Edge Bander M/C)			
ORDER CODE		DIA	CUTTING LENGTH	BORE	TEETH
YTP 16 113	RH	75	60	25	12
YTP 16 113	LH	75	60	25	12

YTP-16		Used :-JAI (Edge Bander M/C)			
ORDER CODE		DIA	CUTTING LENGTH	BORE	TEETH
YTP 16 114	RH	75	60	25	12
YTP 16 114	LH	75	60	25	12



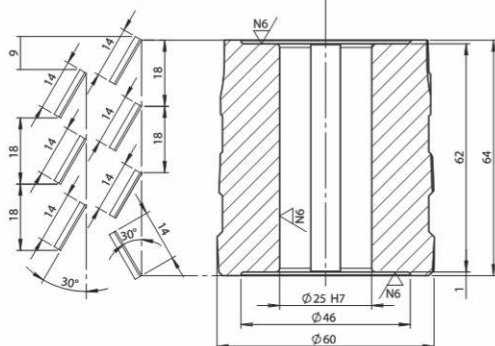
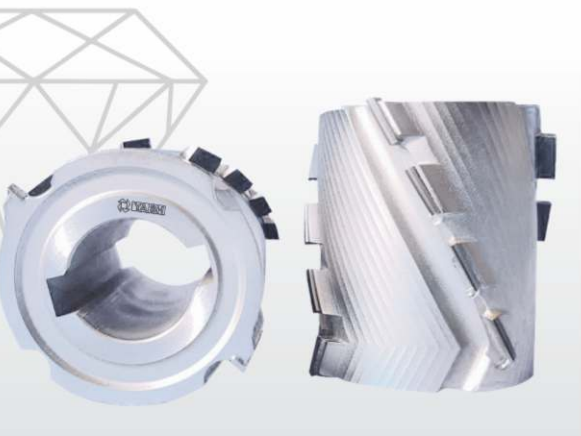
PCD Pre-Milling Cutter Brazed YTP 16

Technical Details :

Use on Spindle Molder Machines, Double-end Tenoners and Shapers Machines

Application :

These Cutters are ideal tools to create precision grooving & rebating in jobs from 4 mm to 38 mm Double-end tenoners and shapers machines



YTP-16		Used :-FELDER (Edge Bander M/C)			
ORDER CODE		DIA	CUTTING LENGTH	BORE	TEETH
YTP 16 115	RH	60	65	25	12
YTP 16 115	LH	60	65	25	12

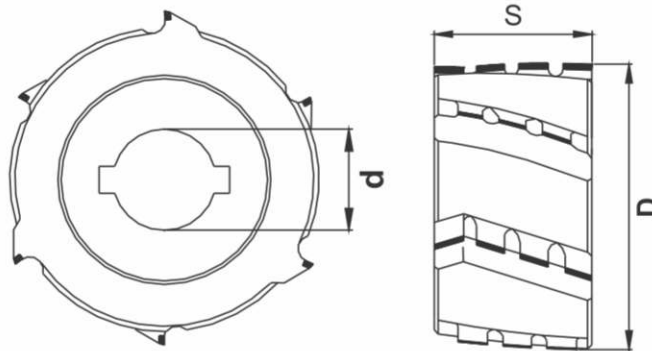


Technical Details :

Used on all Edge Bander Machines

Application :

Joining cutter in diamond with helicoidal wings, height PCD 2,5 mm, suitable for working on chipboard panels, coated, aminated, veneered, M.D.F, it can be used on edge banding machines. Excellent finishing, low noisiness.



YTP-16		Used :-HOMAG (Edge Bander M/C)			
ORDER CODE		DIA	CUTTING LENGTH	BORE	TEETH
YTP 16 116	RH	100	48	30	9
YTP 16 116	LH	100	48	30	9

YTP-16		Used :-HOMAG (Edge Bander M/C)			
ORDER CODE		DIA	CUTTING LENGTH	BORE	TEETH
YTP 16 117	RH	100	62	30	12
YTP 16 117	LH	100	62	30	12

YTP-16		Used :-BIESSE(Edge Bander M/C)			
ORDER CODE		DIA	CUTTING LENGTH	BORE	TEETH
YTP 16 118	RH	80	48	30	9
YTP 16 118	LH	80	48	30	9

YTP-16		Used :-BIESSE(Edge Bander M/C)			
ORDER CODE		DIA	CUTTING LENGTH	BORE	TEETH
YTP 16 119	RH	80	65	30	12
YTP 16 119	LH	80	65	30	12

YTP-16		Used :-WOOD MASTER(Edge Bander M/C)			
ORDER CODE		DIA	CUTTING LENGTH	BORE	TEETH
YTP 16 120	RH	80	48	30	9
YTP 16 120	LH	80	48	30	9

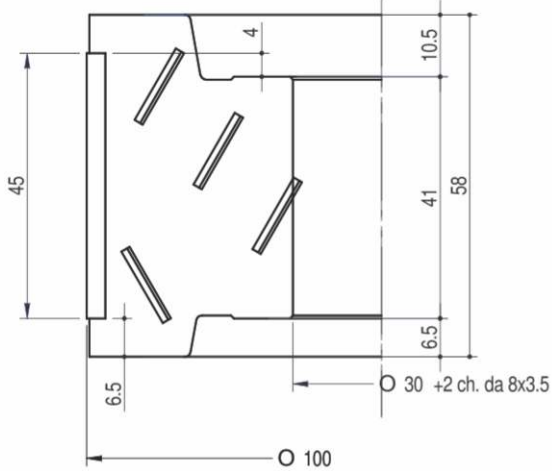


Technical Details :

Used on all Edge Bander Machines

Application :

Jointing cutter in diamond with helicoidal wings, height PCD 2,5 mm, suitable for working on chipboard panels, coated, aminated, veneered, M.D.F, it can be used on edge banding machines. Excellent finishing, low noisiness.



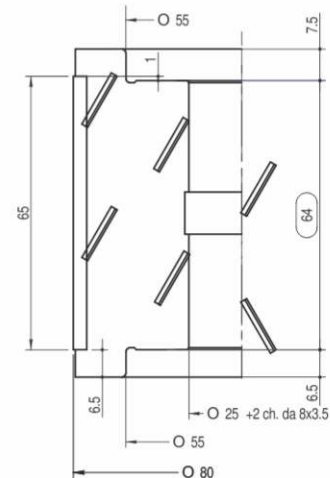
Used :-HOMAG (Edge Bander M/C)

YTP-17	ORDER CODE		DIA	CUTTING LENGTH	BORE	TEETH
	YTP 17 101	RH	100	48	30	9
	YTP 17 101	LH	100	48	30	9

Used :-HOMAG (Edge Bander M/C)

YTP-17	ORDER CODE		DIA	CUTTING LENGTH	BORE	TEETH
	YTP 17 102	RH	100	62	30	12
	YTP 17 102	LH	100	62	30	12

PCD Pre-Milling Cutter Replaceable YTP 17



Used :-BIESE (Edge Bander M/C)

YTP-17	ORDER CODE		DIA	CUTTING LENGTH	BORE	TEETH
	YTP 17 103	RH	100	43	30	9
	YTP 17 103	LH	100	43	30	9

Used :-BIESE (Edge Bander M/C)

YTP-17	ORDER CODE		DIA	CUTTING LENGTH	BORE	TEETH
	YTP 17 104	RH	100	65	30	12
	YTP 17 104	LH	100	65	30	12





Technical Details :
Used on all Edge Bander Machines

Application :
Joining cutter in diamond with helicoidal wings, height PCD 2,5 mm, suitable for working on chipboard panels, coated, aminated, veneered, M.D.F, it can be used on edge banding machines. Excellent finishing, low noisiness.

YTP-17		Used :-JAI (Edge Bander M/C)			
ORDER CODE		DIA	CUTTING LENGTH	BORE	TEETH
YTP 17 105	RH	125	48	30	9
YTP 17 105	LH	125	48	30	9

YTP-17		Used :-JAI (Edge Bander M/C)			
ORDER CODE		DIA	CUTTING LENGTH	BORE	TEETH
YTP 17 106	RH	125	62	30	12
YTP 17 106	LH	125	62	30	12

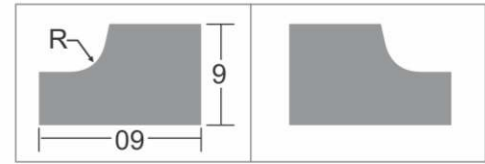
YTP-17		Used :-JAI (Edge Bander M/C)			
ORDER CODE		DIA	CUTTING LENGTH	BORE	TEETH
YTP 17 107	RH	75	60	25	12
YTP 17 107	LH	75	60	25	12

YTP-17		Used :-FELDER(Edge Bander M/C)			
ORDER CODE		DIA	CUTTING LENGTH	BORE	TEETH
YTP 17 108	RH	60	62	25	12
YTP 17 108	LH	0	62	25	12

YTP-17		Used :-WOOD TEC(Edge Bander M/C)			
ORDER CODE		DIA	CUTTING LENGTH	BORE	TEETH
YTP 17 109	RH	125	48	30	9
YTP 17 109	LH	125	48	30	9

YTP-17		Used :-WOOD TEC(Edge Bander M/C)			
ORDER CODE		DIA	CUTTING LENGTH	BORE	TEETH
YTP 17 110	RH	125	62	30	12
YTP 17 110	LH	125	62	30	12

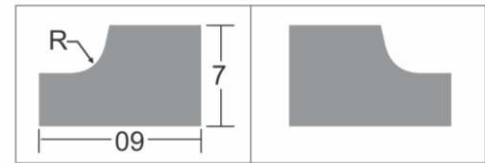
YTP-17		Used :-UMABOY(Edge Bander M/C)			
ORDER CODE		DIA	CUTTING LENGTH	BORE	TEETH
YTP 17 111	RH	62	48	20	9
YTP 17 111	LH	62	48	20	9



Used :-JAI M/C

YTP-18	ORDER CODE	CUTTING DIA	BORE	RAIUS	TEETH
	YTP 18 101	48	16	2R	3
	YTP 18 102	48	16	3R	3

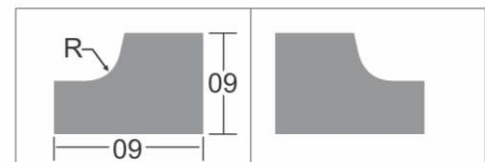
PCD Edge Trimming Cutter YTP 18



Used :-UMABOY M/C

YTP-18	ORDER CODE	CUTTING DIA	BORE	RAIUS	TEETH
	YTP 18 103	48	16	2R	3
	YTP 18 104	48	16	3R	3

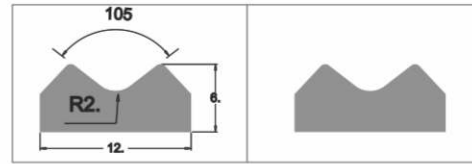
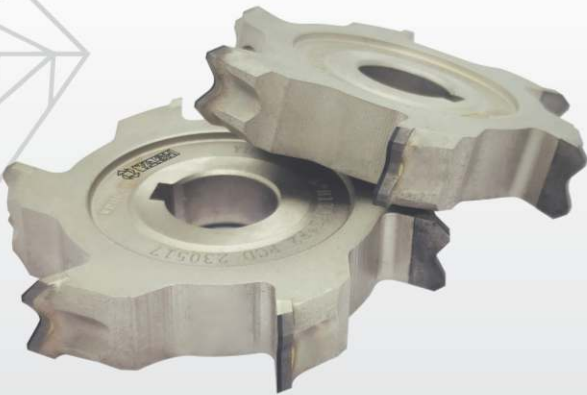
PCD Edge Trimming Cutter YTP 18



Used :-WOOD TECH M/C

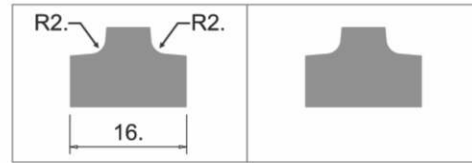
YTP-18	ORDER CODE	CUTTING DIA	BORE	RAIUS	TEETH
	YTP 18 105	71	16	2R	3
	YTP 18 106	71	16	3R	3

PCD Edge Trimming Cutter YTP 18



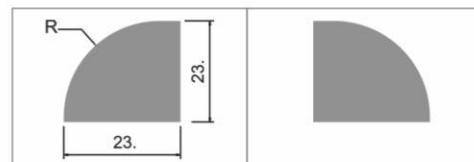
YTP-18		Used :-WOOD TECH M/C			
ORDER CODE	CUTTING DIA	BORE	RAIUS	TEETH	
YTP 18 107	69	16	2R	6	

PCD Edge Trimming Cutter YTP 18



YTP-18		Used :-WOOD TECH M/C			
ORDER CODE	CUTTING DIA	BORE	RAIUS	TEETH	
YTP 18 108	68	16	2R	6	

PCD J Profile Cutter YTP 19



YTP-19		DAI	WOOD THICKNESS	BORE	TEETH
ORDER CODE					
YTP 19 101		125	18mm / 23 R	30	3

Technical Details :

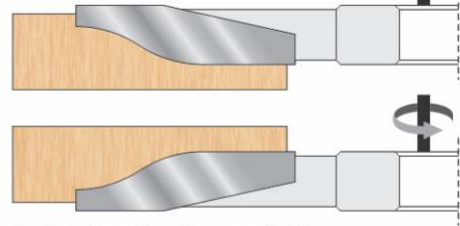
Use on Spindle Moulder

Application :

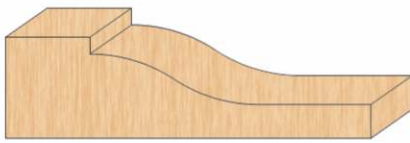
These tools produce precise and clean work results, when panel raising in solid wood. To create furniture, door panels, cotted ceilings and paneling. It can cut across and with the grain in hard woods. also useful in resinous and MDF type boards. You can resharpen the blades easily and quickly. The carbide tips are German standards and of 5 mm thickness for longer life.



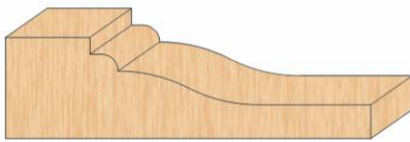
RH- Cutter head with wood Lower



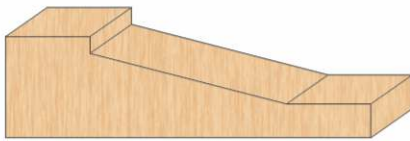
LH- Cutter head with wood Above



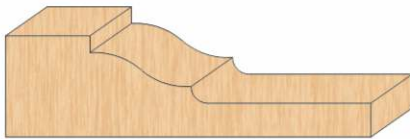
YTP 20								
ORDER CODE		DIA	MOULDING SIZE	BORE			TEETH	
YTP 20 101	RH	175	40 x 18	30	31.75	35	4	
YTP 20 102	LH	175	40 x 18	30	31.75	35	4	
YTP 20 103	RH	175	50 x 18	30	31.75	35	4	
YTP 20 104	LH	175	50 x 18	30	31.75	35	4	



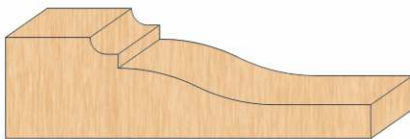
YTP 20								
ORDER CODE		DIA	MOULDING SIZE	BORE			TEETH	
YTP 20 105	RH	175	40 x 18	30	31.75	35	4	
YTP 20 106	LH	175	40 x 18	30	31.75	35	4	
YTP 20 107	RH	175	50 x 18	30	31.75	35	4	
YTP 20 108	LH	175	50 x 18	30	31.75	35	4	



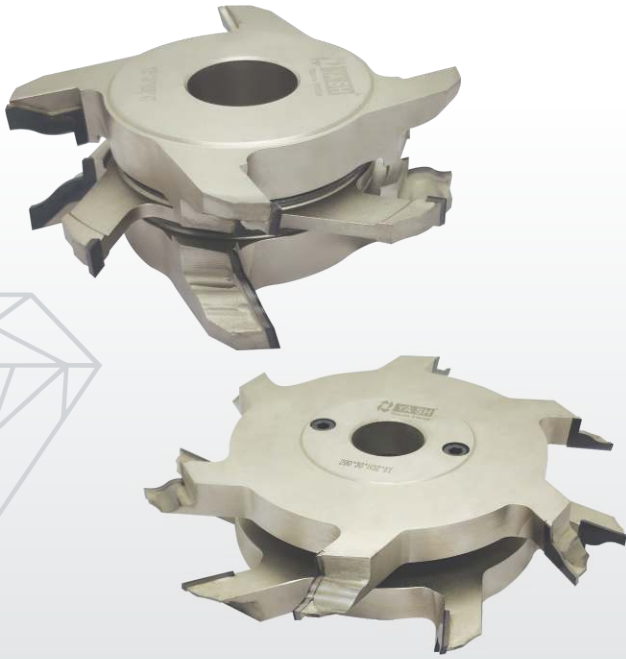
YTP 20								
ORDER CODE		DIA	MOULDING SIZE	BORE			TEETH	
YTB 20 109	RH	175	40 x 18	30	31.75	35	4	
YTB 20 110	LH	175	40 x 18	30	31.75	35	4	
YTB 20 111	RH	175	50 x 18	30	31.75	35	4	
YTB 20 112	LH	175	50 x 18	30	31.75	35	4	



YTP 20								
ORDER CODE		DIA	MOULDING SIZE	BORE			TEETH	
YTB 20 113	RH	175	40 x 18	30	31.75	35	4	
YTB 20 114	LH	175	40 x 18	30	31.75	35	4	
YTB 20 115	RH	175	50 x 18	30	31.75	35	4	
YTB 20 116	LH	175	50 x 18	30	31.75	35	4	



YTP 20								
ORDER CODE		DIA	MOULDING SIZE	BORE			TEETH	
YTB 20 125	RH	175	40 x 18	30	31.75	35	4	
YTB 20 126	LH	175	40 x 18	30	31.75	35	4	
YTB 20 127	RH	175	50 x 18	30	31.75	35	4	
YTB 20 128	LH	175	50 x 18	30	31.75	35	4	

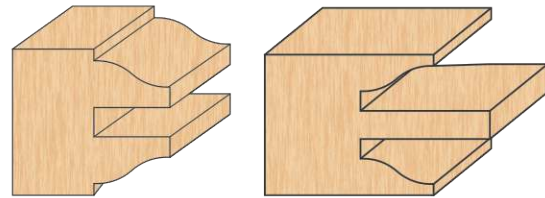


Technical Details :

Use on Spindle Moulder

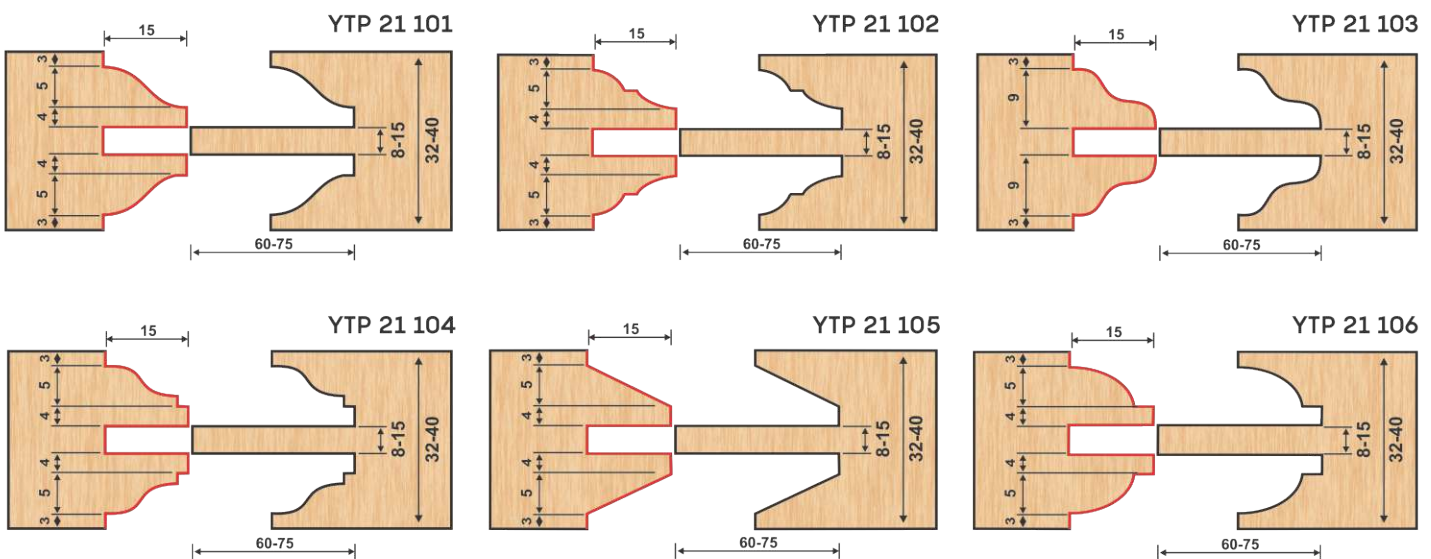
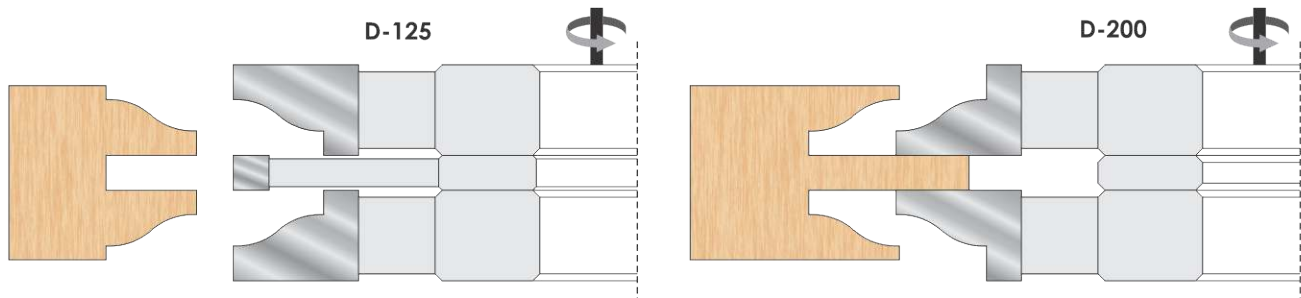
Application :

The heads for making profiles & counter profiles are fitted with profiled knives 1 & 2 which are then interchangeable. Extra long tenons gives good quality of door-working while making doors very sturdy.



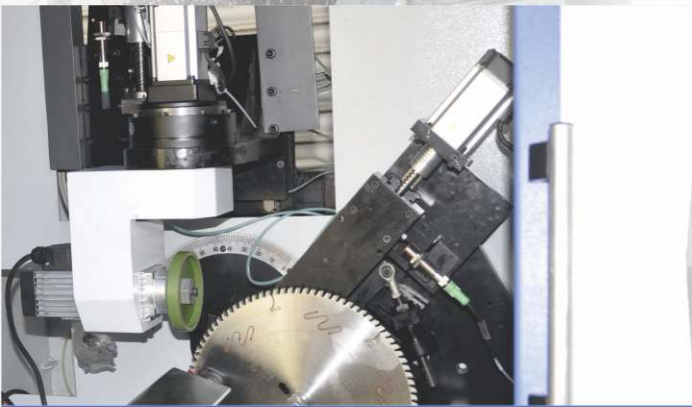
YTP-21						
ORDER CODE	DAI	WOOD THICKNESS	BORE		TEETH	
YTP 21 101	125 / 200	32 to 40	30	31.75	35	4 / 6
YTP 21 102	125 / 200	32 to 40	30	31.75	35	4 / 6
YTP 21 103	125 / 200	32 to 40	30	31.75	35	4 / 6
YTP 21 104	125 / 200	32 to 40	30	31.75	35	4 / 6
YTP 21 105	125 / 200	32 to 40	30	31.75	35	4 / 6
YTP 21 106	125 / 200	32 to 40	30	31.75	35	4 / 6

5 PCS. Cutter Set



Any Customized Specifications Also Can Make As Per Requirements

▶ Circular Saw Grinding Machine



5 Axis
CNC Grinding
Machine

Make in India

Technical Parameter	Y-600
Out Side Diameter	100-600mm
Bore Diameter	12to75mm
Thickness	5.0
Tooth Pitch	7-100mm
Grinding Speed	18 Teeth/Min.
Cutting Angel	-10°to 30°
Wheel Diameter	100mm
Wheel Bore Diameter	16mm
Voltage	415V 3Phase



MAKE IN INDIA

▶ CARBIDE Tipped Band Saw Blades

YT-184

1st Time in India

TCT BAND SAW BLADE

Make by YASH TOOLING SYSTEM

Precise
Powerful
Innovative

Horizontal & Vertical



CNC Curve Alloy
Band Saw Blade

Suitable for mahogany, solid wood, all kinds of jigsaw cutting. European welding process is adopted. High hardness, light and fast cutting, smooth cutting surface.



ADVANTAGES

- 1) Carbide being a harder and stronger raw material, can cut both HARD and SOFT Wood.
- 2) Better Finish (75% Planning Finish).
- 3) Wood Saving due to Thinner Kerf and Better Finish (kerf only 1.6mm to 2mm thickness and 75% Planning Finish, saving almost 3mm to 4mm wood in each cut)
- 4) Longer Life compared to regular High Carbon Blade.

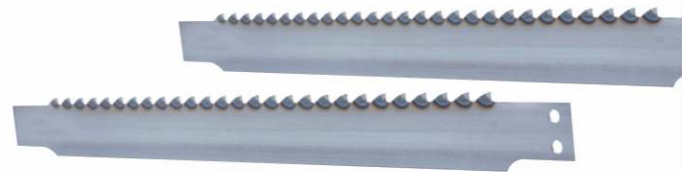


Carbide Frame Saw Blade

YE-184

Horizontal & Vertical

CODE	Length	Thickness	Width	TPI
5292	3500mm	1.3mm/0.9mm	27mm	22TPI
5293	4318mm	1.6mm/0.9mm	27mm	22TPI
5294	5000mm	1.3mm/0.9mm	27mm	22TPI
5295	5200mm	1.6mm/0.9mm	35mm	22TPI
5296	4600mm	1.6mm/0.9mm	35mm	22TPI
5297	6900mm	1.1mm/0.8mm	40mm	22TPI
5298	7150mm	1.55mm/0.9mm	50mm	22TPI
5299	7000mm	1.6mm/0.95mm	60mm	22TPI
5300	7150mm	1.6mm/0.95mm	60mm	22TPI
5301	7150mm	1.2mm/0.8mm	60mm	22TPI
5302	9725mm	1.6mm/0.95mm	60mm	22TPI
5303	9725mm	1.7mm/1mm	60mm	22TPI
5304	4850mm	1.6mm/0.9mm	100mm	22TPI
5305	7010mm	1.6mm/0.9mm	75mm	22TPI
5306	7086mm	1.7mm/1mm	75mm	22TPI
5307	7086mm	1.7mm/1mm	60mm	22TPI
5308	7137mm	1.7mm/1mm	60mm	22TPI
5309	7137mm	1.7mm/1mm	75mm	22TPI
5310	7975mm	2mm/1mm	75mm	22TPI
5311	4800mm	1.5mm/0.9mm	35mm	15TPI
5312	3500mm	1.4mm/0.8mm	17mm	15TPI
5313	3500mm	1.6mm/0.8mm	12.7	15TPI
5314	2374mm	1.4mm/0.8mm	17mm	15TPI
5315	3340mm	1.4mm/0.8mm	25mm	15TPI
5316	4600mm	1.5mm/0.9mm	35mm	15TPI
5317	3250mm	1.6mm/0.9	25mm	22TPI



Band Saw Blade
Grinding Machine





CHAIN PAD



CHAIN PAD



CHAIN PAD



CHAIN PAD



CHAIN PAD



CHAIN PAD



GRIPPER FOR 6 SIDE BORING



RUBBER ROLLER FOR AUTO EDGE BANDER



RUBBER ROLLER FOR AUTO EDGE BANDER



RUBBER ROLLER FOR AUTO EDGE BANDER



RUBBER ROLLER FOR AUTO EDGE BANDER



RUBBER ROLLER FOR AUTO EDGE BANDER



GRIPPER FOR 6 SIDE BORING



END CUTTING ROLLER FOR AUTO EDGE BANDER



FEEDING ROLLER FOR AUTO EDGE BANDER



FEEDING ROLLER FOR AUTO EDGE BANDER



BUFFING WHEEL FOR AUTO EDGE BANDER



BUFFING WHEEL FOR AUTO EDGE BANDER



BUFFING WHEEL FOR AUTO EDGE BANDER



END CUTTING STOPPER



END CUTTING STOPPER



FEEDING WHEEL



STEEL ROLLER



TRIMMING MOTOR



TRIMMING MOTOR



END CUTTING CYLINDER



SOLENOID VALVE



POSITION INDICATOR



POSITION INDICATOR



SUCTION PLATE



SUCTION PLATE



RUBBER SEALING



RUBBER SEALING



VACUUM POD FOR CNC



VACUUM POD FOR CNC



SUCTION PLATE



SUCTION PLATE



VACUUM BLOCK



VACUUM BLOCK



VACUUM POD FOR CNC



VACUUM POD FOR CNC



SCRAPER



LOCATING RING FOR CNC



FLAG STOPPER



MAGNIFIED GLASS



DRO



DEGREE INDICATOR



WOOD CLAMP

One Stop Solution For Machine Tools & Spares

AVAILABLE SPARE PART FOR

- PANEL SAW MACHINE
- CNC ROUTER MACHINE
- COLD PRESS MACHINE
- CNC BORINGMACHINE
- MULTI BORING MACHINE
- EDGE-BANDER MACHINE
- HOT PRESS MACHINE
- BEAM SAW MACHINE



MULTI BORING SCALE



TILTING INDICATOR



DRO ASSEMBLY



PARALLEL RIP FENCE



CROSS CUT RIP FENCE



CUTTER UPDOWN MOTOR



MITRE FENCE ASSEMBLY



PUSHER FOR PANEL SAW



KNIFE FOR PANEL SAW



DUST HOOD



HAND WHEEL



FLAG STOPPER



EUROPEAN DUST HOOD



FLAG STOPPER



SLIDING ROLLER



ARM ROLLER



PENCIL HEATER



HEATING PLATE



CARDIAN JOINT



LIMIT SWITCH



ADJUSTABLE HANDLE



MANUAL TRIMMER



MANUAL TRIMMER



TRIMMER KNIFE



MANUAL CUTTING



MANUAL TRIMMER



2R BIT



AIR FLOATING BALL



BEAM SAW RUBBER STRIP



RUBBER RING FOR CNC



DUSTPROOF FOR BEAM SAW



FLOATING TABLE ROLLER



SUPPORTING TABLE ROLLER



CLAMP PAD FOR MULTI BORING



BRACKET ROLLER



GLUE APPLICATOR



NOB FOR PANEL SAW



CNC SENSOR



LEAD SHINE DRIVE



SPINDLE FOR CNC



INVERTER



OIL PUMP



MANUAL OIL PUMP



AUTOMATIC OIL PUMP



BELT



TOOL HOLDER CLAMP



MOTOR



2811MA DRIVER

New **Technology**
One **Quality**
One **Name**

Next Generation Tools By



YASH TOOLING SYSTEM

Plot No.: 462, Road No.: 12, Kathwada G. I. D. C., Odhav, Ahmedabad – 382430, Gujarat, INDIA

Phone : +91 9925430880 , 8000630880, 9925412341 **Email** : yashtoolingsystems@gmail.com